

HMS *Havering Music School*



Get into music
with Havering Music School

**Tuition
from only
£7.00 per
week**

www.haveringmusicschool.org.uk



Havering
LONDON BOROUGH

About us

Havering Music School is the main provider of instrumental tuition to schools in the London Borough of Havering. With our team of over 80 specialist teachers, we currently have more than 2,350 pupils learning to play instruments every week.

As well as providing tuition in schools, we also offer an exciting range of activities through our Saturday and Weekday Music Centres. These include instrumental lessons, a chance to play or sing with other musicians in an ensemble and perform in our many concerts.

The opportunities outlined in this brochure are open to pupils of any age or standard attending any of our schools. Each individual school sets a fee reduction policy for families on low incomes. If you believe you may be eligible, please contact your child's school for details of any assistance available.

Our aims

To engage children in music making from Early Years, with a range of choices from primary age onwards.

To deliver personalised learning for every child and young person, meeting their needs and nurturing their aspirations.

To invite young people to help shape our music provision through consultation and participation.



Inspired teaching

Havering Music School believes instrumental lessons are only part of giving your child a rounded musical education.

Experts say that the additional skills learnt by regularly playing and performing in an ensemble, accompanied by theory lessons, are proven to be the most effective method of speeding your child's musical progress and development.

Summer schools (included as part of the Silver and Gold packages) will give your child a fun opportunity to expand their musical progress in a less formal setting away from normal school life.

Building on success

Havering Music School offers a range of progression routes from first-access activities in your child's school and locality, through to borough-wide ensembles, building on its highly-acclaimed work and strong links with world class organisations and musicians.


Havering Music School

The Walk, Hornchurch RM11 3TL

Telephone: 01708 450313

Email: musicschool@havering.gov.uk

www.haveringmusicschool.org.uk

 @haveringmusic



A packaged service

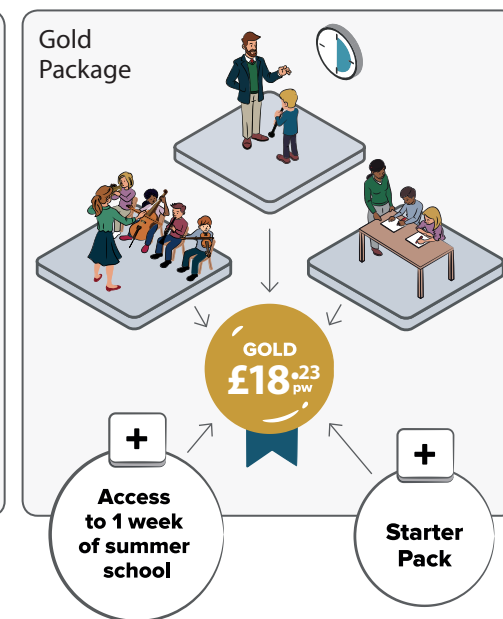
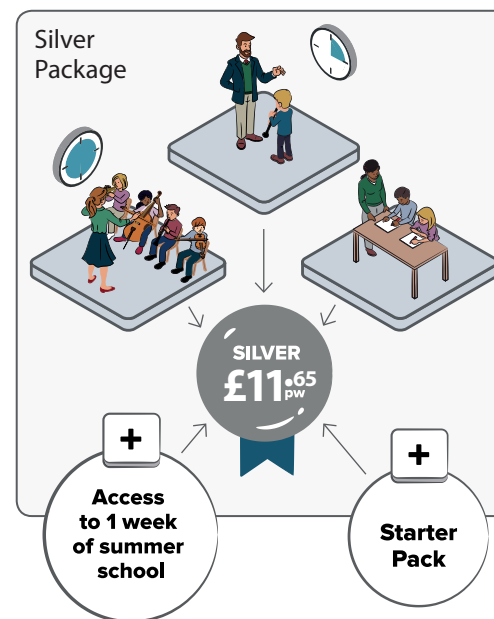
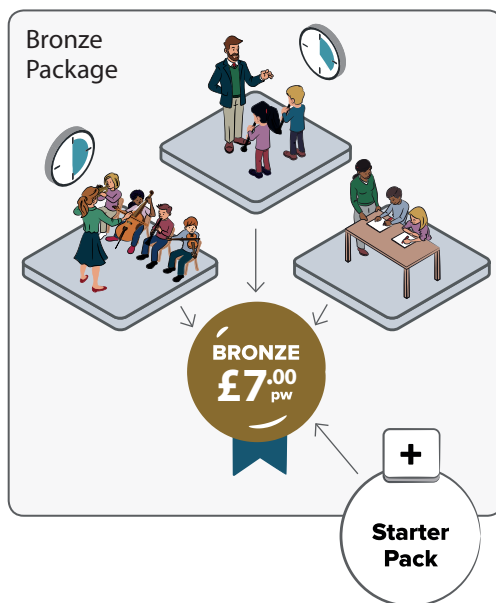
Havering Music School understands the demands placed on family finances and, in response to this, have developed an innovative plan to help you to budget for your child's music lessons in a cost effective way.

The total annual cost of the lessons and activities in each package have been divided into 12 equal payments. These direct debit payments will be continuous throughout the year.

Choose the package that offers the lesson length you require. A Theory/Musicianship class and an ensemble activity are included at each level.

Please note:

These package prices do not include the cost of instrument hire. The Bronze package is not suitable for drum tuition. It may not be possible to offer theory and ensemble activities in every school as this is subject to accommodation and staffing restrictions.



How the scheme works

We guarantee to supply a tutor for 36 weeks of term-time lessons during the academic year (36 sessions at our Saturday and Weekday centres). If a tutor is absent we will try to send in a replacement teacher or arrange a replacement lesson. If neither is possible and you have not received your minimum number of lessons, we will issue a credit.

We need one full calendar month's notice in writing to change to a different package. Your direct debit amount will be altered to reflect those changes and you will receive confirmation of this in writing.

You can end your membership by giving us one full calendar month's notice by letter or email direct to Havering Music School (see contacts on page 3). Please note this information cannot be given to your child's school or to the council accounts department.

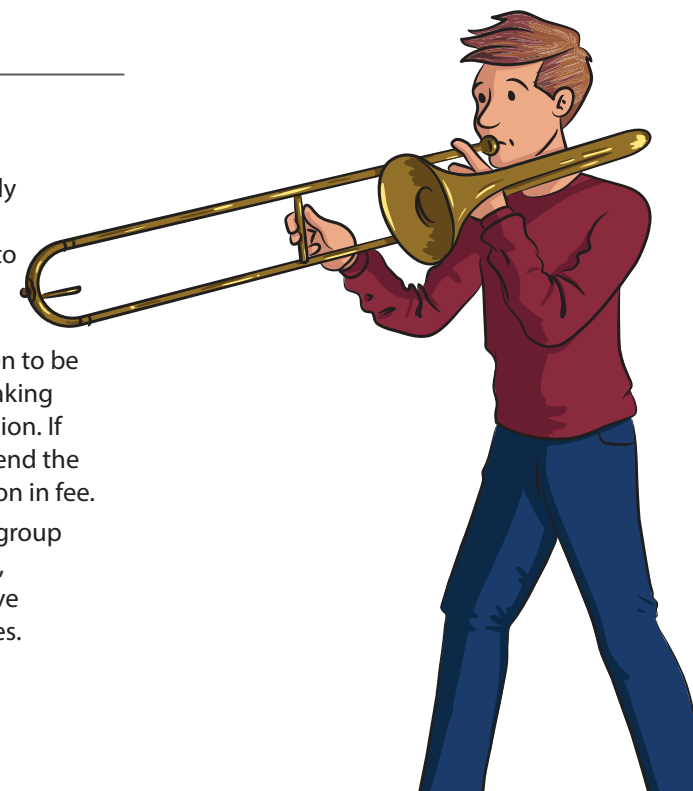
Example: You give notice on any day in April, but your full calendar month's notice will start on 1st May and you will leave on 31st May. (Your final payment will be taken on 24th April).

We will do our best to accommodate any changes of instrument or lesson length

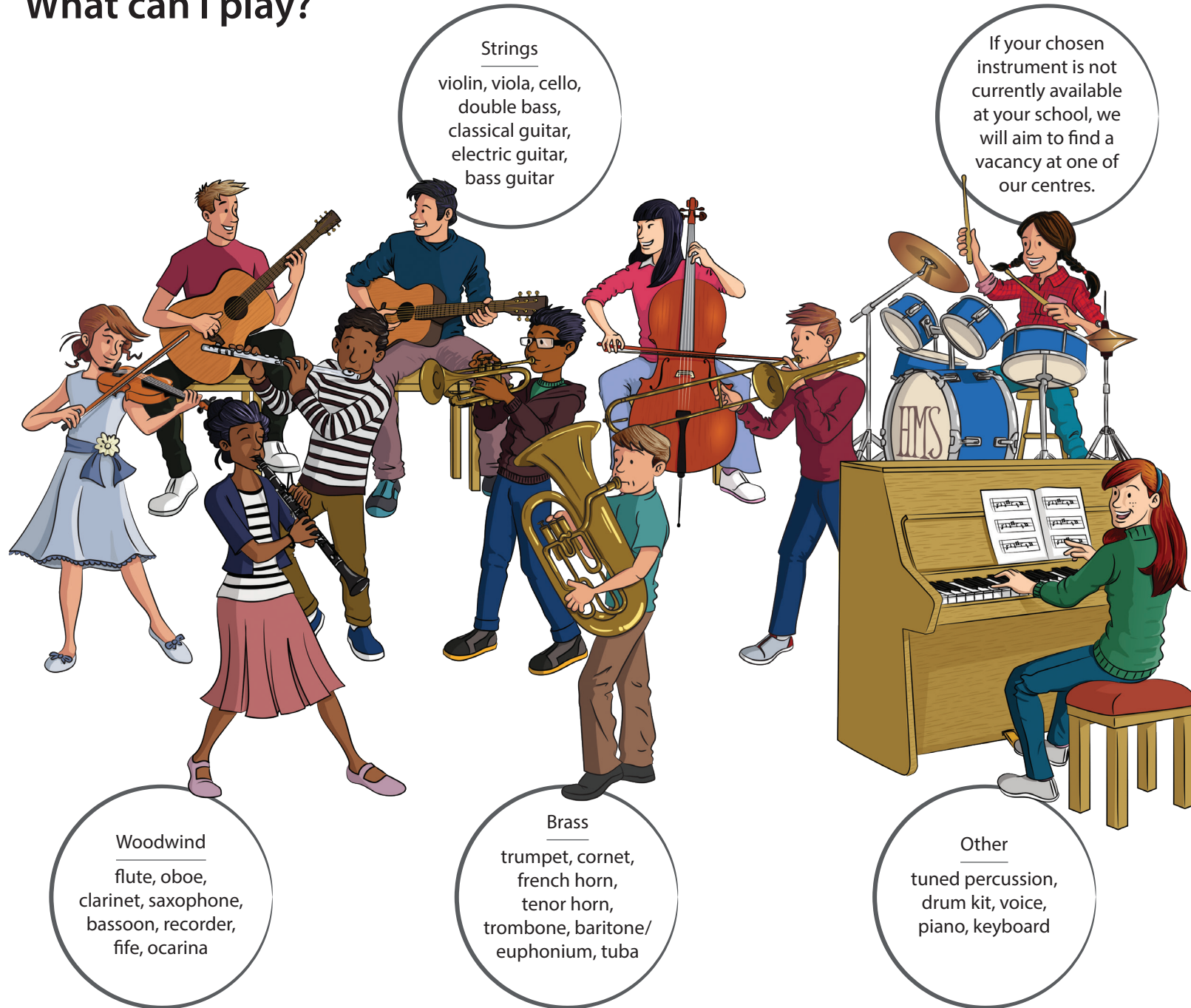
but this may not be immediately possible due to the availability of teaching staff and the need to alter individual teaching hours.

We believe that there are huge educational benefits for children to be involved in ensemble music making and receiving music theory tuition. If you only want your child to attend the lesson, there will be no reduction in fee.

If your school theory lesson or group activity is at an unsuitable time, you will be offered an alternative lesson time at one of our centres.



What can I play?



Music is a science

Music is precise, specific; it demands exact acoustics. A full score is a chart, a graph which indicates frequencies, intensities, volume changes, melody and harmony all at once with the most exact control of time.

Music is mathematical

Music is rhythmically based on the subdivision of time into fractions which must be done instantaneously, not worked out on paper.

Music is a foreign language

Most of the terms are in Italian, German or French and the notation is certainly not English but a highly developed kind of shorthand that uses symbols to represent ideas. Music is the most complete and universal language.

Music is physical education

Music requires fantastic coordination of fingers, hands, arms, lips, cheek and facial muscles. In addition there is extraordinary control of the diaphragm, back, stomach and chest muscles, which respond to the sound the ear hears and the mind interprets.

Music is art

Music allows people to take all these dry, technically challenging techniques and use them to create emotion. That is one thing science cannot duplicate: humanity, feeling and emotion.

LEARNING MUSIC IS FUN!

Music Centres at Havering Music School

Weekday

Weekday Music Centre is open at the Music School and Havering Sixth Form College on Monday, Tuesday and Wednesday evenings in term time. A limited number of instrumental lessons are available, but the main focus is on ensemble playing under the guidance of our specialist tutors. Groups are suitable for students from Year 3 upwards.

Saturday

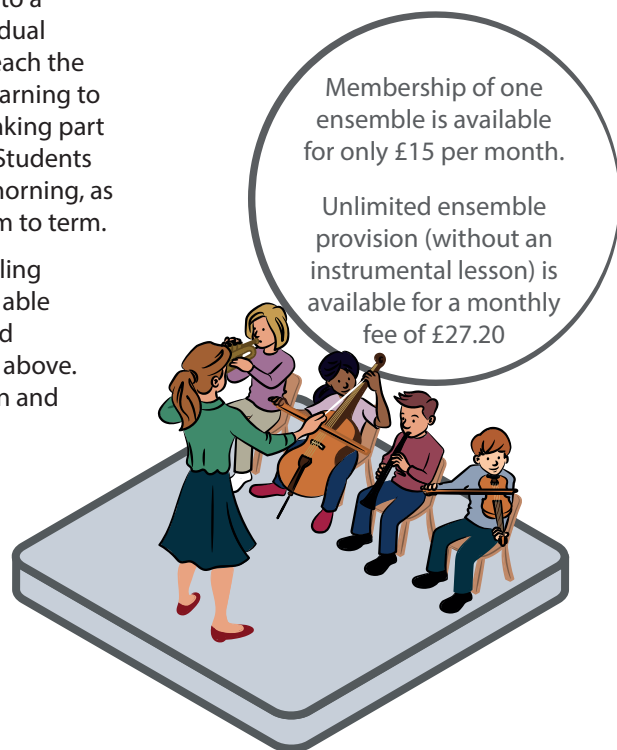
Based at Havering Sixth Form College, Hornchurch, Saturday Morning Music School caters for infants to sixth formers. A varied range of lessons and ensembles are available and students work to a timetable tailored to their individual needs. Students are helped to reach the highest possible standards by learning to play with other musicians and taking part in theory/musicianship classes. Students must be available to attend all morning, as timetables can change from term to term.

Please note that, due to timetabling constraints, our centres are only able to offer Silver and Gold packaged tuition to students of Year 3 and above. We have a separate Kindergarten and

a Year 2 instrumental programme that offers a structured first access programme specifically for younger children. Please see our separate leaflet for more detailed information.

Both centres offer a tiered/progressive programme of ensembles that take students on a journey from the junior bands through to the senior bands and orchestras.

A comprehensive list of all our centre based ensemble activities can be found on our website www.haveringmusicsschool.org.uk.



Membership of one ensemble is available for only £15 per month.

Unlimited ensemble provision (without an instrumental lesson) is available for a monthly fee of £27.20

General information

Fees

The monthly cost of our tuition packages is calculated by taking the annual cost and dividing it into twelve equal payments. You pay the same monthly fee all year round in the same way as your utility and mobile phone bills. The Council will issue you with an invoice on the first of each month after receipt of your direct debit instruction. The payment will be collected on or after the date given.

You can settle the invoice by other payment methods before the Direct Debit date but you cannot pay it at Havering Music School, as your account will not get credited and the Direct Debit will still be collected.

We review our lesson charges and instrumental hire fees every April and you will receive advance notice of any fee changes. To enable us to offer these packages, we regret that we are unable to accept cash payments.

Loan of instruments

There is a limited supply of instruments available for short term hire, at an annual cost of only £40.00. These are only available to pupils who are receiving lessons on that instrument with a Havering Music School teacher. You will need to complete a loan form and are responsible for the safekeeping of the instrument and we recommend that you insure hired instruments against loss or damage. Instruments must be returned to the Music School immediately if your child stops receiving tuition from us.

Examinations

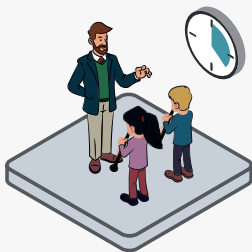
Associated Board and Trinity College exams take place at the end of each term. Your child's teacher will inform you when they are ready to be entered for an exam. Entry forms must be completed, signed by both the teacher and parent/carer and returned to the Music School by the given deadline along with all required fees. Exams of Grade 6 and above have the added benefit of being accredited for UCAS points to credit towards Further Education and University course entrance.

Assisted instrument purchase scheme

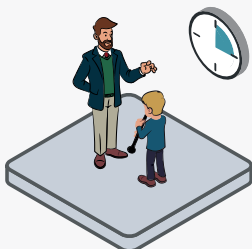
The Assisted Instrument Purchase Scheme (AIPS) enables pupils at Local Authority schools to purchase instruments without paying VAT, subject to criteria. Further information and forms are available from our office.



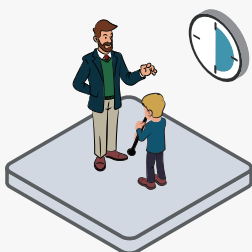
Bronze Package



Silver Package



Gold Package



** Prices correct at April 2019*

How to apply...

Please complete the application form and direct debit mandate using black ink and block capitals and return to us.

We will contact you to confirm receipt.

You will receive confirmation of your direct debit payment separately.

Your Direct Debit will be automatically renewed unless you notify us of any changes.

Haverling Music School will work out the most suitable group for your child and confirm your child's lesson and activity times prior to tuition commencing. Please do not send payment with your application.

If your child wishes to learn more than one instrument, please contact us for details of the reduced rates for second and third instrument tuition.

How to apply...

Havering Music School – Instrumental tuition request

Please complete one form per child, USING BLACK INK AND BLOCK CAPITALS.

Your child's details:

Name: Date of Birth: / / M/F

I wish to apply for a lesson at my child's
school/at Havering Music School/Centre:

School Year:

Please decide which instrument(s) your child would like to learn,
then enter the name(s) of the instrument(s) below

1st choice instrument:

2nd choice instrument (optional)

3rd choice instrument (optional)

Current Level: ☐ BEGINNER ☐ GRADE

Now please decide which package you would like for your child -
monthly charges (weekly equivalents in brackets)

	BRONZE	SILVER	GOLD
1st instrument	<input type="checkbox"/> £30.35 (£7.00)	<input type="checkbox"/> £50.50 (£11.65)	<input type="checkbox"/> £79.00 (£18.23)
Single ensemble only	<input type="checkbox"/> £15.00 (£3.46)		
Unlimited ensemble only	<input type="checkbox"/> £27.20 (£6.28)	(N.B. – Prices correct at 1.4.19)	

Your contact details:

Mr/Mrs/Ms/Dr:

Name:

Telephone:

Email:

Address:

Postcode:

The Council holds personal information about its customers and clients and Havering's residents. All the information about you that we hold is protected under the Data Protection Act 1998. The Act refers to users of personal information as "Data Controllers" (such as the Council) who must work within the requirements of the Act when receiving and using information about you.

Direct Debit Instruction

Please find below an Instruction to request payment by Direct Debits.
The total amount of your instrumental lessons will be collected monthly.
Please complete the form fully and return it to us by detaching this form,
folding and sealing it, and posting back to us.

The Direct Debit Guarantee

- This Guarantee is offered by all Banks and Building Societies that accept instructions to pay Direct Debits.
- If there are any changes to the amount, date or frequency of your Direct Debit the London Borough of Havering will notify you 10 working days in advance of your account being debited or as otherwise agreed.
- If you request the London Borough of Havering to collect a payment, confirmation of the amount and date will be given to you at the time of the request.
- If an error is made in the payment of your Direct Debit by the London Borough of Havering or your Bank or Building Society, you are entitled to a full and immediate refund of the amount paid from your Bank or Building Society.
- If you receive a refund you are not entitled to, you must pay it back when The London Borough of Havering asks you to.
- You can cancel your Direct Debit at any time by simply contacting your Bank or Building Society. Written confirmation may be required. Please also notify us.

Instruction to your Bank or Building Society to pay direct debits

Please pay the London Borough of Havering Direct Debits from the account detailed in this instruction subject to the safeguards assured by the Direct Debit Guarantee. I understand that this instruction may remain with the London Borough of Havering and, if so, details will be passed electronically to my Bank/Building Society.



Full postal address of your Bank/Building Society

To: The Manager
Address
.....
Postcode

Name(s) of Account Holder(s)

.....

Account Number

.....

Branch Sort Code

.....

Originator's Identification Number

9 5 4 2 7 8

Originator's Account Number

.....

Signature(s)

Date

This section is not part of the instruction to
your Bank/Building Society. **LBH use only**

Customer name

Address

Date

Actioned by

FWD to Bank